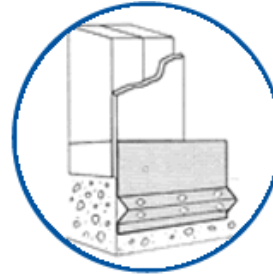
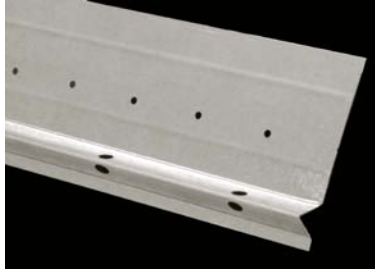




“Specialists in Expanded Metal Building Products”

FHA #7 FOUNDATION WEEP SCREED



#7 Foundation Weep Screed	Flange Size	Ctns/Pallet	Nominal Lbs/Ctn	Nominal Lbs/Plt
1/2"	3 1/2"	25	77	1925
5/8"	3 1/2"	25	82	2050
3/4"	3 1/2"	25	86	2150
7/8"	3 1/2"	25	90	2250
1"	3 1/2"	25	95	2375

10' Lengths – 25 pcs/ctn – 250' per ctn

The #7 Foundation Weep Screed is used to provide a weep mechanism as part of the drainage system as required at the bottom of all framed walls; by all major building codes and the International Building Code in ASTM C1063. The larger holes in the ground flange are bonding holes as the entire surface of the sloped ground provides for drainage once the stucco has hydrated and shrinkage has occurred. The 3-1/2" nailing flange serves as a flashing when water resistant, breathable building paper or paper backed lath is installed over the flange.

ASTM C653 - Standard specification for steel sheet, zinc-coated (galvanized) or zinc-iron alloy coated (galvannealed) by the hot-dip process

ASTM C841 - Standard specification for installation of interior lathing and furring

ASTM C1047 - Standard specification for gypsum wallboard and gypsum veneer base accessories.

ASTM C1063 - Standard specification for installation of lathing and furring for portland cement-based plaster

NILES BUILDING PRODUCTS CO.

Company Headquarters
1600 Hunter Street
Niles, Oh 44446

Dallas/Fort Worth Service Center
6400 Wuliger, Ste A
North Richland Hills, TX 76180

Southeast Distribution Center
1325 Cobb International Dr
Kennesaw, GA 30152

Phone: 800-323-3329
Fax: 330-544-8868

www.nilesbldg.com