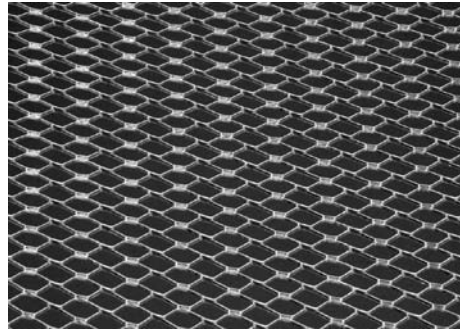




“Specialists in Expanded Metal Building Products”

DIAMOND MESH LATH SPECIFICATION



Wt. Per Sq. Yd.	Sheet Size	Pcs. / Bdl	Yds. / Pallet
1.75 lbs.	27" x 96"	10	1000
2.50 lbs.	27" x 96"	10	1000
3.40 lbs.	27" x 96"	10	1000

50 bundles per pallet

Niles's Diamond Metal Lath is a versatile metal lath ideal as a plaster base and reinforcement for all type of walls, ceilings, and fireproofing of steel beams and columns. Easy to cut and form to ornamental plaster work. Provides ample keying for scratch coat and is commonly used for plaster machine application. This lath is produced with ASTM A653 standard specification for steel sheet, zinc-coated (galvanized) or zinc-iron alloy coated (galvannealed) by hot-dip process.

ASTM C841 Standard specification for installation of interior lathing and furring

ASTM C847 Standard specification for Metal Lath (2.5 and 3.4 only)

NILES BUILDING PRODUCTS CO.

Company Headquarters
1600 Hunter Street
Niles, Oh 44446

Dallas/Fort Worth Service Center
6400 Wuliger, Ste A
North Richland Hills, TX 76180

Southeast Distribution Center
1325 Cobb International Dr
Kennesaw, GA 30152

Phone: 800-323-3329

Fax: 330-544-8868

www.nilesbldg.com