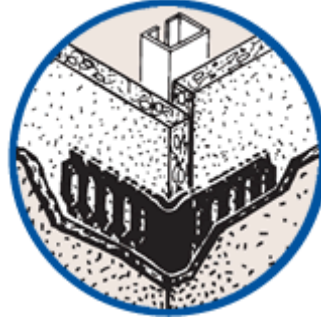
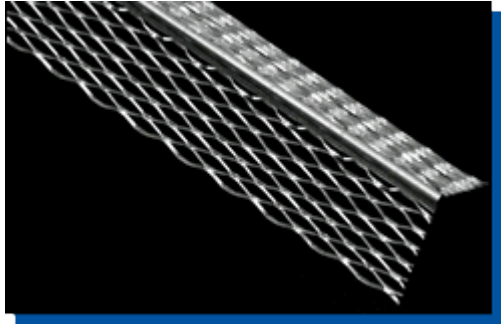




“Specialists in Expanded Metal Building Products”

NILES 1-A CORNER BEAD



Niles 1-A Corner Bead Standard 2-5/8" x 2-5/8"	Ft/Ctn	Ctns/Pallet	Nominal Lbs/Ctn	Nominal Lbs/Plt
8'	240'	40	52	2080
10'	300'	40	56	2240

30 pcs/ctn

The Niles 1-A Corner Bead with a wing size 2-5/8" x 2-5/8", is used to reinforce external corners in Portland cement stucco applications. The 2-5/8" expanded flanges which can easily be flexed over irregular or uneven corners, allow for complete embedment of the entire bead, especially near the nose where strength is needed most. The solid metal nose provides rigidity for straight corners.

ASTM C653 - Standard specification for steel sheet, zinc-coated (galvanized) or zinc-iron alloy coated (galvannealed) by the hot-dip process

ASTM C841 - Standard specification for installation of interior lathing and furring

ASTM C1047 - Standard specification for gypsum wallboard and gypsum veneer base accessories

ASTM C1063 - Standard specification for installation of lathing and furring for portland cement-based plaster

NILES BUILDING PRODUCTS CO.

Company Headquarters
1600 Hunter Street
Niles, Oh 44446

Dallas/Fort Worth Service Center
6400 Wuliger, Ste A
North Richland Hills, TX 76180

Southeast Distribution Center
1325 Cobb International Dr
Kennesaw, GA 30152

Phone: 800-323-3329
Fax: 330-544-8868

www.nilesbldg.com