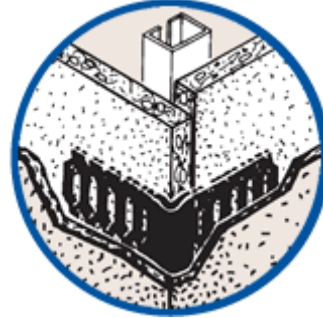
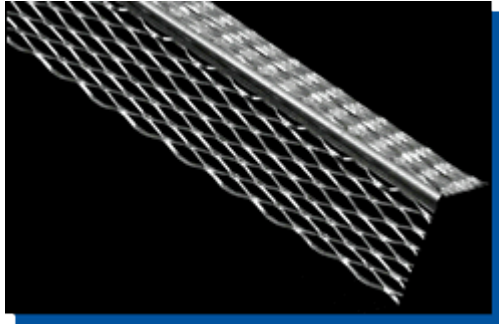




“Specialists in Expanded Metal Building Products”

NILES 1-A CORNER BEAD - ZINC



Niles 1-A Corner Bead Standard 2-5/8" x 2-5/8" - Zinc	Ft/Ctn	Ctns/Pallet	Nominal Lbs/Ctn	Nominal Lbs/Plt
10'	300'	40	48	1920

30 pcs/ctn

The Niles 1-A Corner Bead Zinc with a wing size 2-5/8" x 2-5/8", is used to reinforce external corners in Portland cement stucco applications. The 2-5/8" expanded flanges which can easily be flexed over irregular or uneven corners, allow for complete embedment of the entire bead, especially near the nose where strength is needed most. The solid metal nose provides rigidity for straight corners.

ASTM B69-87 - Standard specification for flat rolled zinc. Approximately 99% pure zinc

ASTM C1063 - Standard specification for installation of lathing and furring for portland cement-based plaster

ASTM C841 - Standard specification for installation of interior lathing and furring

NILES BUILDING PRODUCTS CO.

Company Headquarters
1600 Hunter Street
Niles, Oh 44446

Dallas/Fort Worth Service Center
6400 Wuliger, Ste A
North Richland Hills, TX 76180

Southeast Distribution Center
1325 Cobb International Dr
Kennesaw, GA 30152

Phone: 800-323-3329
Fax: 330-544-8868

www.nilesbldg.com