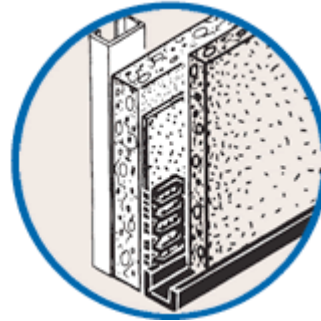
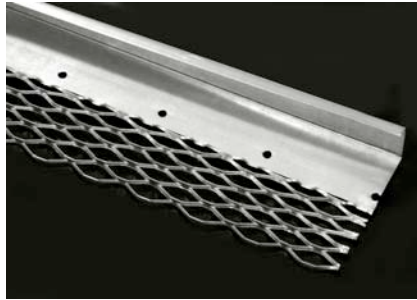




“Specialists in Expanded Metal Building Products”

NILES NO. 66-X EXPANDED FLANGE CASING BEAD



Niles No. 66-X Expanded Flange Casing Bead	Length	Ctns/Pallet	Nominal Lbs/Ctn	Nominal Lbs/Plt
1/4"	10'	42	42	1764
3/8"	10'	42	48	2016
1/2"	10'	42	55	2310
5/8"	10'	42	56	2352
3/4"	10'	42	58	2436
7/8"	10'	42	62	2604
1"	10'	42	64	2688
1-1/4"	10'	40	68	2720
1-1/2"	10'	40	72	2880

30pcs/ctn – 300' per ctn

The Niles No. 66-X Casing Bead is used to effectively terminate plaster edge and/or to separate stucco from all other structural membranes at doors, windows and other openings; also when plaster/stucco meets dissimilar material. Expanded flange provides excellent stucco embedment at the junctions of the bead and metal lath.

ASTM C653 - Standard specification for steel sheet, zinc-coated (galvanized) or zinc-iron alloy coated (galvannealed) by the hot-dip process

ASTM C841 - Standard specification for installation of interior lathing and furring

ASTM C1047 - Standard specification for gypsum wallboard and gypsum veneer base accessories

ASTM C1063 - Standard specification for installation of lathing and furring for portland cement-based plaster

NILES BUILDING PRODUCTS CO.

Company Headquarters
1600 Hunter Street
Niles, Oh 44446

Dallas/Fort Worth Service Center
6400 Wuliger, Ste A
North Richland Hills, TX 76180

Southeast Distribution Center
1325 Cobb International Dr
Kennesaw, GA 30152

Phone: 800-323-3329

Fax: 330-544-8868

www.nilesbldg.com