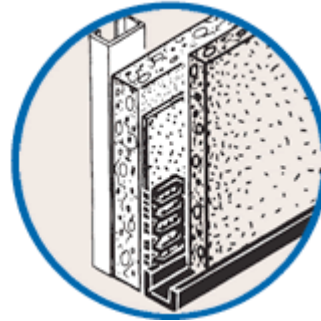
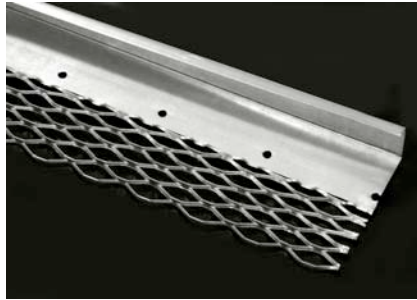




**“Specialists in Expanded Metal Building Products”**

## **NILES NO. 66-X EXPANDED FLANGE CASING BEAD - ZINC**



<b>Niles No. 66-X Expanded Flange Casing Bead - ZINC</b>	<b>Length</b>	<b>Ctns/Pallet</b>	<b>Nominal Lbs/Ctn</b>	<b>Nominal Lbs/Plt</b>
1/4"	10'	42	39	1638
3/8"	10'	42	45	1890
1/2"	10'	42	51	2142
5/8"	10'	42	53	2226
3/4"	10'	42	55	2310
7/8"	10'	42	59	2478
1"	10'	42	60	2520
1-1/4"	10'	40	64	2560
1-1/2"	10'	40	68	2720

30pcs/ctn – 300' per ctn

**The Niles No. 66-X Casing Bead is used to effectively terminate plaster edge and/or to separate stucco from all other structural membranes at doors, windows and other openings; also when plaster/stucco meets dissimilar material. Expanded flange provides excellent stucco embedment at the junctions of the bead and metal lath.**

ASTM B69-87 - Standard specification for flat rolled zinc. Approximately 99% pure zinc

## **NILES BUILDING PRODUCTS CO.**

Company Headquarters  
1600 Hunter Street  
Niles, Oh 44446

Dallas/Fort Worth Service Center  
6400 Wuliger, Ste A  
North Richland Hills, TX 76180

Southeast Distribution Center  
1325 Cobb International Dr  
Kennesaw, GA 30152

Phone: 800-323-3329  
Fax: 330-544-8868

[www.nilesbldg.com](http://www.nilesbldg.com)